

Prestige Masonry
ARCHITECTURAL BLOCK SERIES

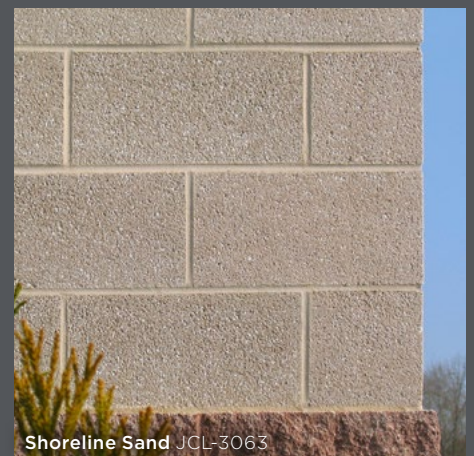
WEATHERED



A smooth face unit, shot blasted to deliver a weathered face texture, with muted aggregate exposure and a sandstone appearance.

Great for schools, libraries, municipal buildings, museums, stadiums, theme parks, and recreational facilities.

- Meets ASTM C90 specifications
- Manufactured with integral water repellent (IWR)
- Available in veneer, structural, and oversize units
- Custom colors and mix designs available



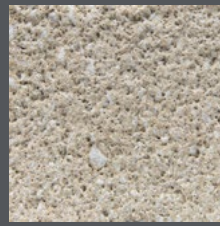
Colors Available:



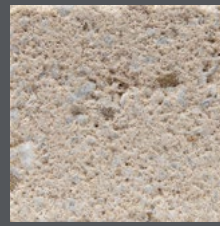
White Storm
JCL-3002



Mont Blanc
JCL-3013



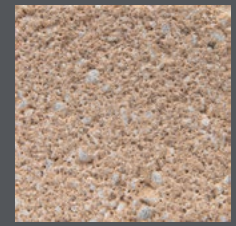
Volcanic Ice
JCL-3032



Amalfi Coast
JCL-3043



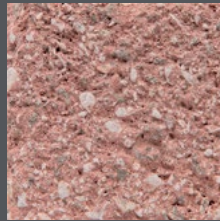
Luminous Sea Salt
JCL-3053



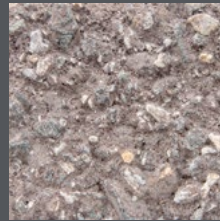
Shoreline Sand
JCL-3063



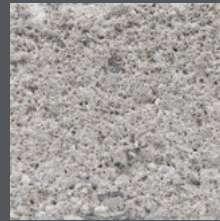
Night Mist
JCL-3192



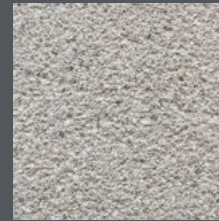
Lava Rock
JCL-3211



Ravine Mirage
JCL-3281



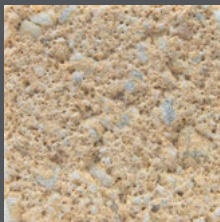
Spotted Lake
JCL-3362



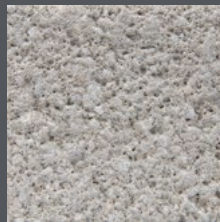
Benji
JCL-3452



Cave of Crystals
JCL-3522



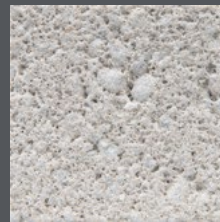
Canary Islands
JCL-3532



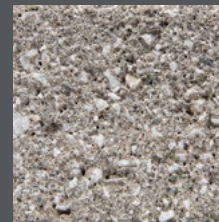
Fountain Geyser
JCL-3542



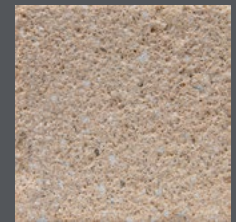
Silver Spun
JCL-3553



Oyster Bay
JCL-3562



Acadia
JCL-3572



Summit Silt
JCL-3582



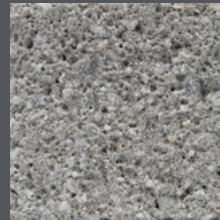
Cliffs of Moher
JCL-3591



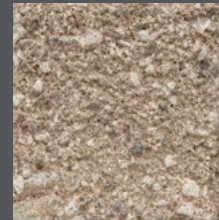
Blowing Rock
JCL-3601



Black Boulder
JCL-3621



Yosemite
JCL-3631



Speckle Stone
JCL-3641



Black Canyon
JCL-3992

NOTE: Actual colors may vary from current production runs.

Always contact a Johnson Concrete Products sales representative for samples.

The JCP color lab is available to work with clients in creating custom colors and matches.



Large enough to deliver.
Small enough to care.
Since 1947.

JohnsonProductsUSA.com

■ Corporate Headquarters
Pipe & Drainage Structures
217 Klumac Road
Salisbury, NC 28144
704.636.5231

■ Raleigh Area Showroom
Masonry & Hardscapes
1401 Hwy 42
Willow Spring, NC 27592
919.552.0233

■ Triad Area Showroom
Architectural Masonry & Hardscapes
514 Burgin Drive
Lexington, NC 27292
336.248.2918

■ Charlotte Area Showroom
Masonry & Hardscapes
106 Old Davidson Place NW
Concord, NC 28027
704.786.4204

