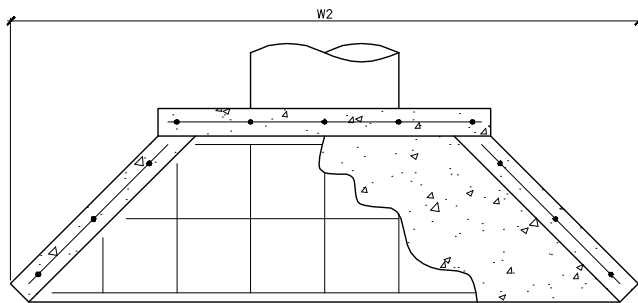
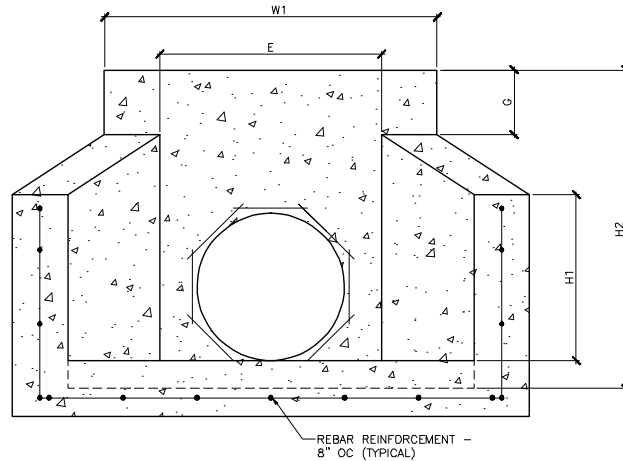


Precast Concrete Single Headwall

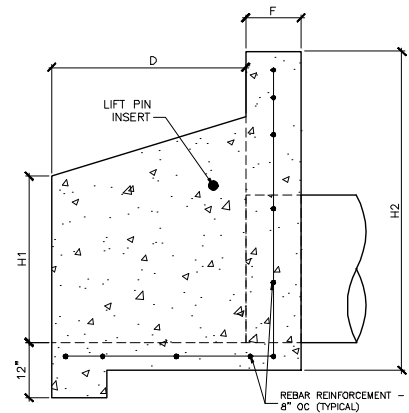
Produced by Mid-Atlantic Drainage, Inc

PRECAST CONCRETE HEADWALLS										
INSIDE PIPE DIAMETER	REBAR	WEIGHT	W1	W2	H1	H2	D	E	F	G
12", 15", 18"	#5	2060	44"	73"	23"	42.5"	18.5"	27"	6"	11.5"
21", 24"	#5	3100	50"	93"	31"	57"	24"	33"	6"	13.5"
27", 30", 36"	#5	5940	64"	118"	40.5"	72"	35"	49"	12"	18"
42", 48"	#5	8040	79"	150"	52"	79"	40"	64"	12"	11"
54", 60", 72"	#5	16000	107.25"	189"	60"	101"	46"	90"	12"	12"

FRONT VIEW



PLAN VIEW



- Concrete shall be 4000 PSI minimum
- Reinforcement steel shall meet ASTM 706 or ASTM 615 for grade 60 with 2" minimum clearance
- Pipe to be grouted into headwall at job site by contractor
- All NCDOT approved headwalls shall have all corners chamfered 1" or have radius of 1"



Large enough to deliver.
Small enough to care.
Since 1947.

JohnsonProductsUSA.com

■ Corporate Headquarters
Pipe & Drainage Structures
217 Klumac Road
Salisbury, NC 28144
704.636.5231

■ Raleigh Area Showroom
Masonry & Hardscapes
1401 Hwy 42
Willow Spring, NC 27592
919.552.0233

■ Triad Area Showroom
Architectural Masonry & Hardscapes
514 Burgin Drive
Lexington, NC 27292
336.248.2918

■ Charlotte Area Showroom
Masonry & Hardscapes
106 Old Davidson Place NW
Concord, NC 28027
704.786.4204

