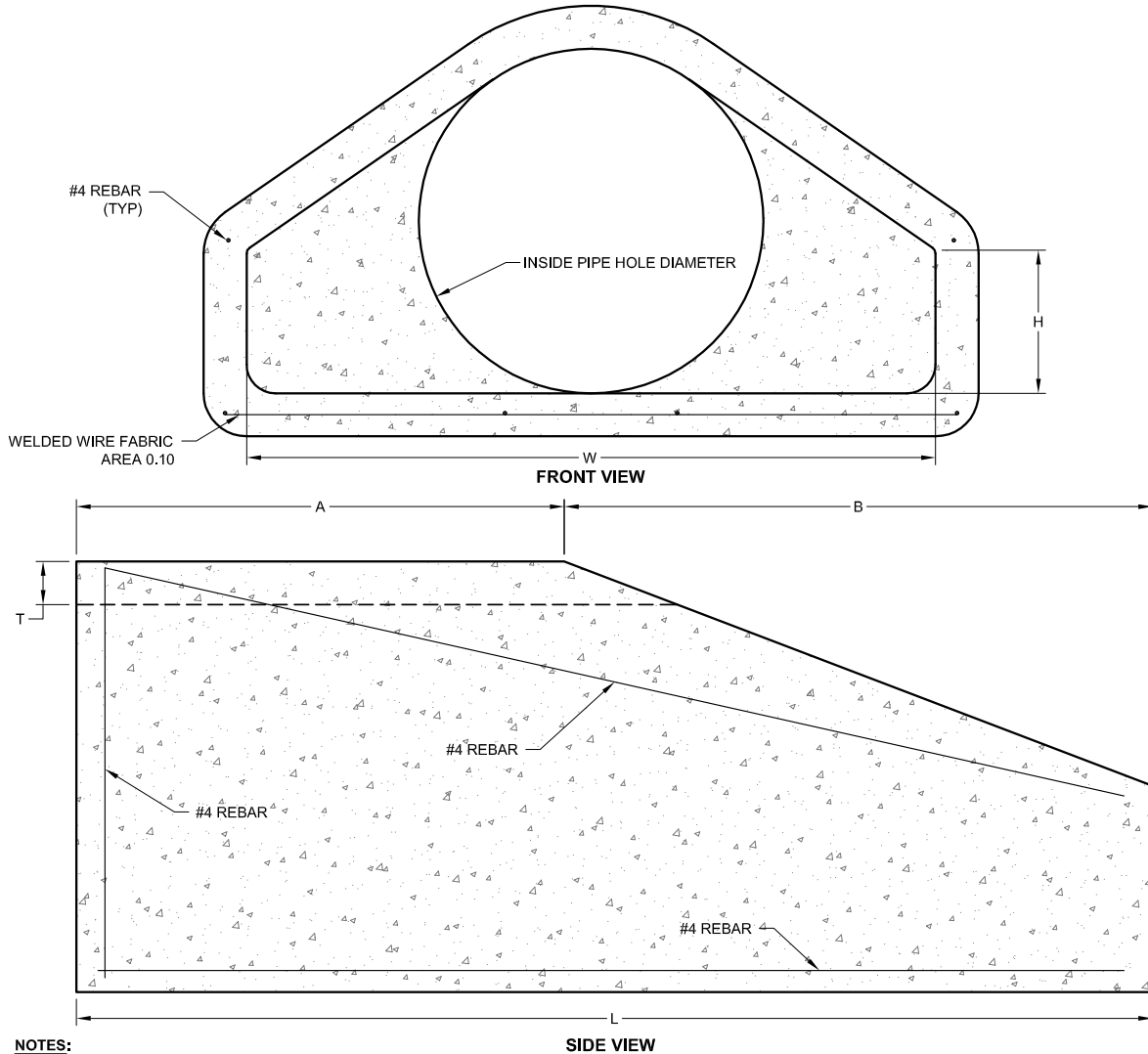


Flared End Sections

Produced by Mid-Atlantic Drainage, Inc

PRECAST CONCRETE FLARED END SECTIONS						
INSIDE PIPE DIAMETER	A	B	L	W	H	T
12"	3'-11"	2'-1"	6'-0"	1'-11 1/2"	6"	2"
15"	3'-8 1/2"	2'-3 1/2"	6'-0"	2'-5"	6 1/2"	2 1/2"
18"	3'-3 1/2"	2'-2"	5'-5 1/2"	2'-11"	10"	2 3/4"
24"	2'-10 1/2"	2'-2"	5'-5 1/2"	3'-11 1/2"	1"	3"
30"	1'-8"	4'-0"	5'-3"	4'-11 1/2"	1'-0 1/2"	3 1/2"
36"	3'-0"	5'-0"	8'-0"	6'-0"	1'-4"	4"
42"	3'-0"	5'-0"	8'-0"	6'-6"	1'-10"	4 1/2"
48"	2'-0"	5'-0"	8'-0"	7'-0"	2'-0"	5"



- NOTES:**
1. CONCRETE COMPRESSIVE STRENGTH SHALL BE 5000 PSI AT 7 DAYS.
 2. REINFORCED STEEL TO MEET ASTM-706
 3. ALL PRECAST ELEMENTS SHALL MEET ASTM-C913
 4. PLACE LIFT HOLES OR PINS IN ACCORDANCE WITH OSHA STANDARD 1926.704
 5. PSI MAX TEN FIBER 4LBS PER YARD



Large enough to deliver.
Small enough to care.
Since 1947.

JohnsonProductsUSA.com

■ Corporate Headquarters
Pipe & Drainage Structures
217 Klumac Road
Salisbury, NC 28144
704.636.5231

■ Raleigh Area Showroom
Masonry & Hardscapes
1401 Hwy 42
Willow Spring, NC 27592
919.552.0233

■ Triad Area Showroom
Architectural Masonry & Hardscapes
514 Burgin Drive
Lexington, NC 27292
336.248.2918

■ Charlotte Area Showroom
Masonry & Hardscapes
106 Old Davidson Place NW
Concord, NC 28027
704.786.4204

